

Lot 1084: Bronte 25 with Norwich façade



5



3



2



N



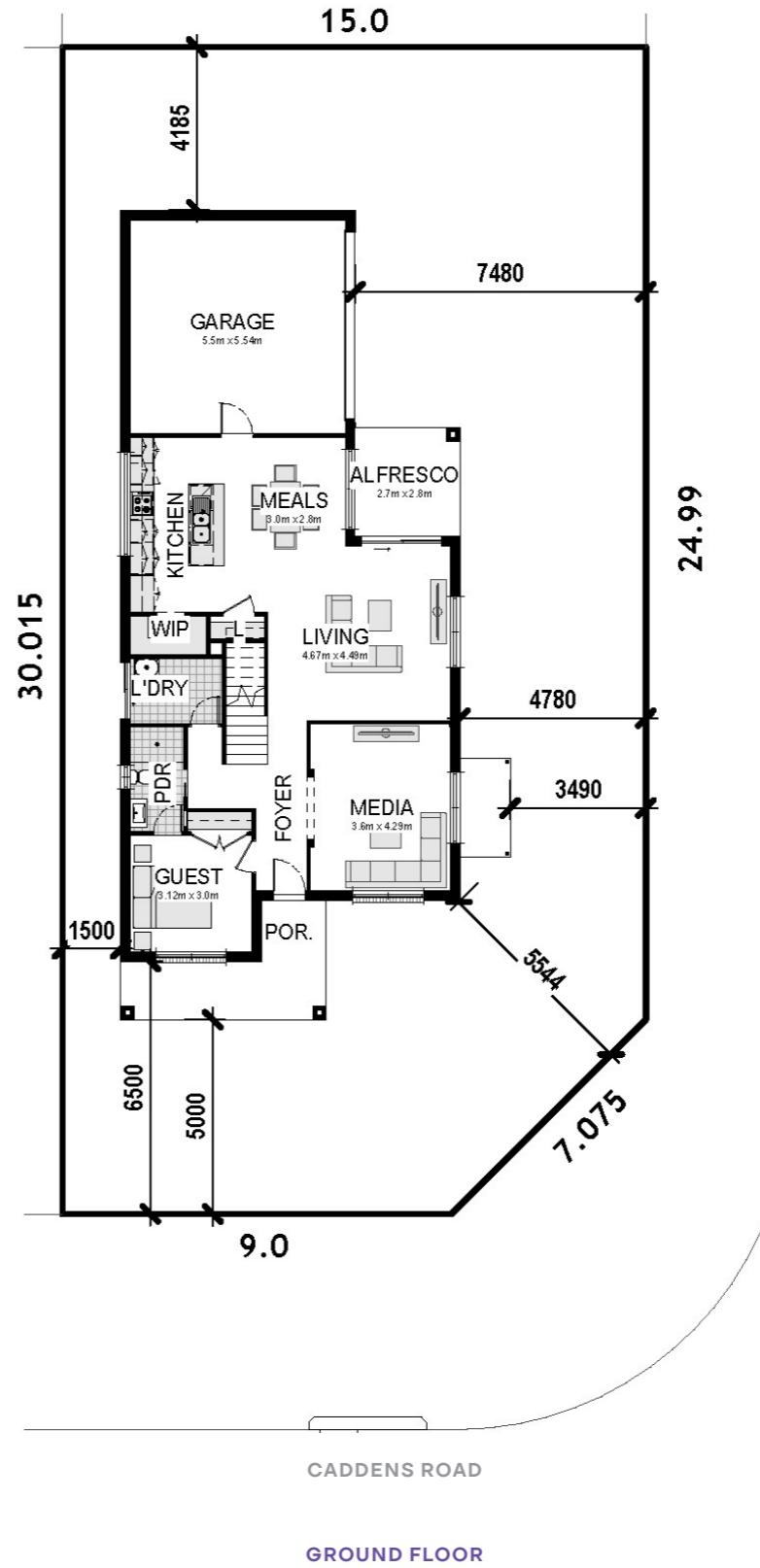
ARTIST IMPRESSION

FEATURES INCLUDE:

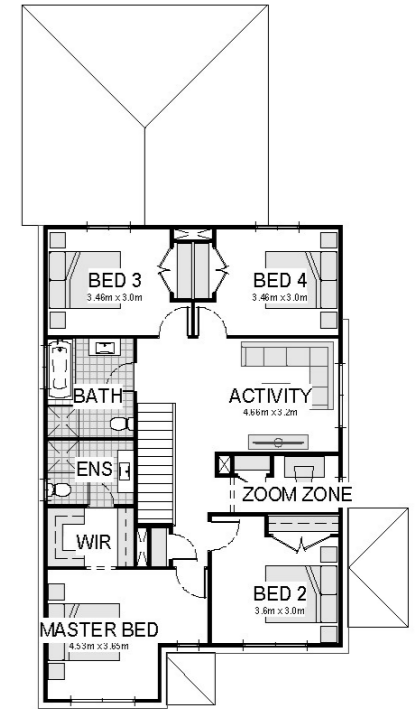
- CONNECT site costs & service connections
- Coloured Concrete Driveway & Path
- Ducted Air-conditioning
- 20mm Stone Tops to Kitchen & Vanities
- Semi-frameless Shower Screens to Main & Master Bathrooms
- Westinghouse 900mm Electric Cooktop & Oven
- Westinghouse S/S Rangehood & Dishwasher
- Sarking to underside of Tiled Roof
- 7 Star BASIX*
- 2590mm Ceiling Height to Ground Floor
- Floor coverings – Laminate & Carpet
- Taubmans 3-coat Paint System
- 25 Downlights
- Automatic sectional Garage Door
- Free-standing Bath
- Price Protection until June 2025
- Grate Drain

LOT SIZE 437 M²

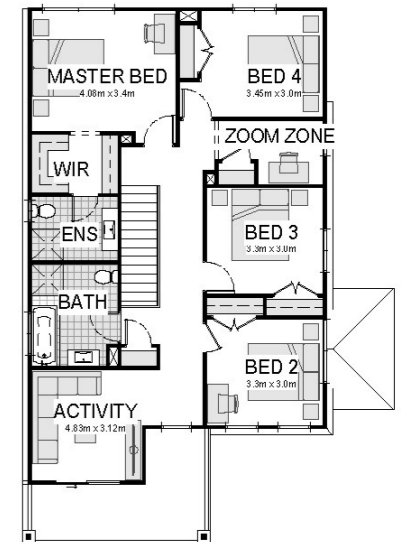
HOUSE SIZE 251.97 M²



Lot 1084: Bronte 25 with Norwich façade



OPTIONAL FIRST FLOOR
MASTER TO FRONT



FIRST FLOOR

Disclaimer: Includes garage, alfresco & porch where included. Photographs, facades, renders and other pictures displayed in this flyer are for illustrative purposes only and may show a facade, landscaping, fixtures, fittings or finishes that are not inclusive of this package, and may be available at an additional cost to the client. For a full list of inclusions, please contact a Bell River Homes Sales consultant. The package provided is based upon Bell River Homes preliminary/preferred siting and preliminary developer land information currently available. Bell River Homes reserves the right to change specifications and prices without notice. Variations to land size and location of services, including but not limited to the specifications listed within the Section 88B instrument for the property may require amendments to the floor plan or house design which will be at an additional cost. The site start date is subject to third party factors, including but not limited to land registration, quantity and type of requested client variations, relevant authority approvals, and the acceptance of tender and contract with Bell River Homes. Bell River Homes' Sale terms and conditions apply and full details of these are available from all Bell River Homes Display Centres. Please contact a Bell River Homes consultant for further information. Bell River Homes Builders Licence Number is 61247C.