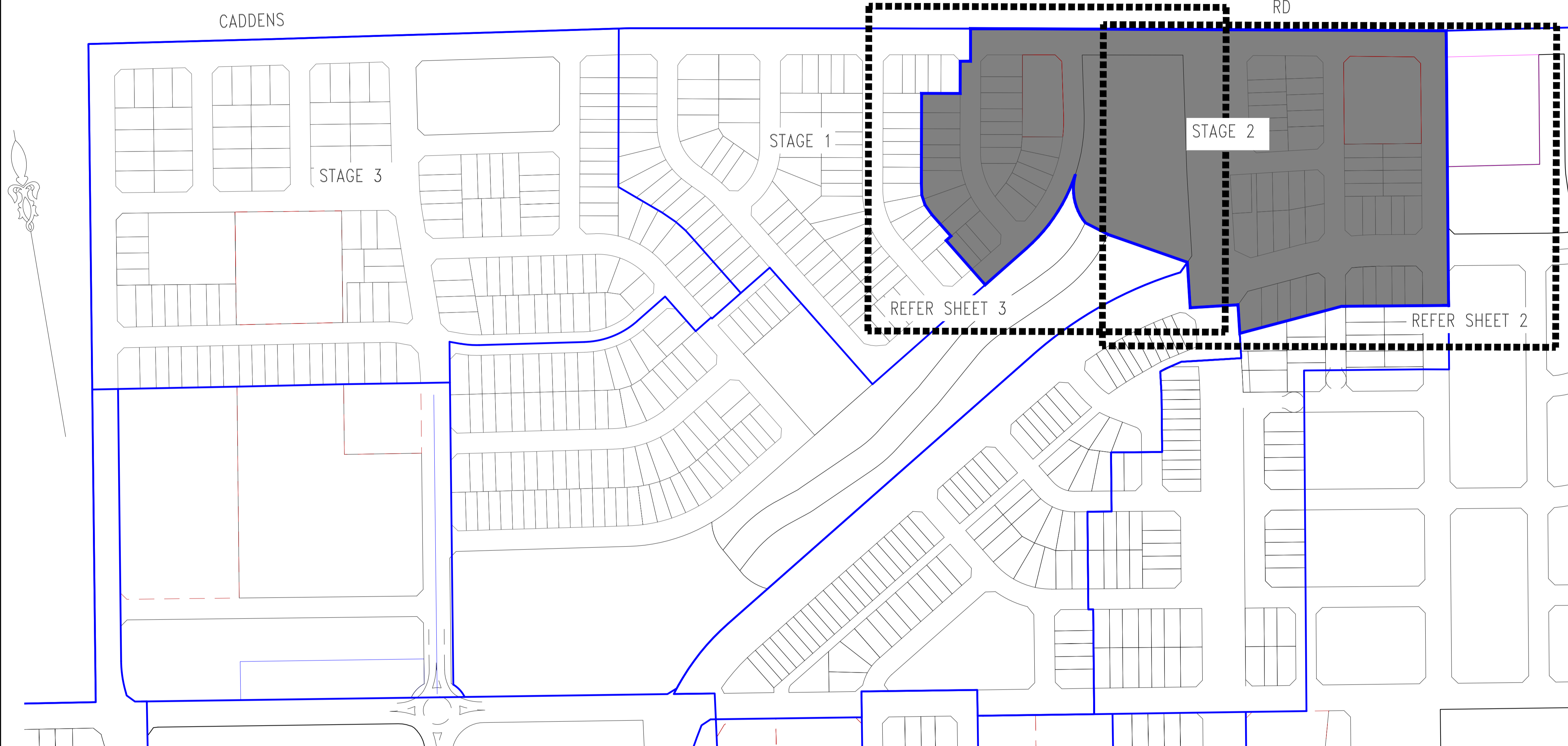


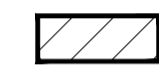


DEVELOPER CONTRACT PLAN
WORK-AS-CONSTRUCTED
STAGE 2



LOCALITY PLAN
NTS

NOTES :-

- DESIGNER & WATER SERVICE COORDINATOR:
RMA INFRASTRUCTURE PTY LTD
PO BOX 273 PENRITH NSW 2751
PH. 47222774. REFERENCE No. W-12570
FOR:
LEGACY PROPERTY SERVICES
LVL 45, 25 MARTIN PLACE
SYDNEY NSW 2000

DIAL BEFORE YOU DIG SHOULD BE CONTACTED PRIOR TO ANY EXCAVATION ON SITE
- THE WORKS AND MATERIAL WERE CONSTRUCTED IN ACCORDANCE WITH THE SEWER RETICULATION CODE OF AUSTRALIA (WSA 02-2002-2.2 VERSION 4) AND SYDNEY WATER TECHNICAL SPECIFICATION (CIVIL) Ver.11.
- ALL STRUCTURES CONSTRUCTED TO FINISHED SURFACE LEVELS. ALL LEVELS QUOTED ON THIS PLAN REFER TO PROPOSED FINISHED SURFACE LEVELS. IT WAS THE CONTRACTORS RESPONSIBILITY TO LIAISE WITH THE CIVIL CONTRACTOR TO VERIFY THE PROPOSED SURFACE LEVELS QUOTED ON THIS PLAN WERE CORRECT PRIOR TO INSTALLING SEWER STRUCTURES. IF ANY DISCREPANCIES WERE FOUND, THE WATER SERVICING COORDINATOR WAS NOTIFIED IMMEDIATELY.
- PIPES CONCRETE ENCASED SHOWN ACCORDINGLY:

EACH SECTION OF PIPE CONCRETE ENCASED IN THE FOLLOWING MANNER :
-EACH FLEXIBLE PIPE JOINT REQUIRES A 12mm THICK COMPRESSIBLE MEMBRANE INSERTED.
-AT THE ENDS OF EACH SECTION OF ENCASEMENT A 600mm ROCKER PIPE INSTALLED.
-CONCRETE ENCASEMENT TYPE 12U AS PER SEW-1205 Ver3 (2016)
- AREAS HATCHED THUS NOT DRAWN:

- CURRENT SERVICES SEARCH & SITE CHECK OF ALL EXISTING SERVICES NECESSARY PRIOR TO THE COMMENCEMENT OF WORK & APPROPRIATE PROCEDURES, PRECAUTIONS AND CARE TAKEN BY THE CONTRACTOR WHEN WORKING IN CLOSE PROXIMITY TO SERVICES. THE CONTRACTOR WAS TO VERIFY THE EXACT LOCATION OF ALL EXISTING SERVICES DURING CONSTRUCTION AND ANY DAMAGE TO EXISTING SERVICES WAS RECTIFIED AT THE CONTRACTORS EXPENSE.
- FIELD COMPACTION TESTS REQUIRED UNDERTAKEN TO SATISFY THE SEWAGE CODE OF AUSTRALIA SYDNEY WATER EDITION 1 - VERSION 4 (WSA 02-2002-2.2 VERSION 4) & SYDNEY WATER TECHNICAL SPECIFICATION CIVIL v 11. IT WAS THE LISTED FIELD TESTERS RESPONSIBILITY TO ENSURE THE CORRECT NUMBER OF TESTS WERE CARRIED OUT TO SATISFY THE STANDARDS AND SPECIFICATIONS AS PER INSTRUCTIONS TO FIELD TESTERS CLAUSE 3. COMPACTION TEST = 398 TESTS TOTAL.
- JUNCTION AND CONCRETE ENCASEMENT LOCATIONS WERE SHOWN AS APPROXIMATE ONLY. IT WAS THE CONTRACTORS RESPONSIBILITY TO LIAISE WITH CIVIL CONTRACTOR TO CONFIRM EXACT LOCATIONS REQUIRED. THE CONTRACTOR WAS RESPONSIBLE TO KEEP AN ACCURATE RECORD OF JUNCTION AND CONCRETE ENCASEMENT CHAINAGES DURING CONSTRUCTION. CHAINAGES WERE PROVIDED TO THE DESIGNER AT THE COMPLETION OF CONSTRUCTION.
- PROPERTY CONNECTIONS (PCS) INSTALLED IN ACCORDANCE WITH SEWAGE CODE OF AUSTRALIA WSA 02-2002-2.2
- PCS DN100 UNLESS NOTED OTHERWISE.
- PCS CONFIGURATION BASED ON RETICULATION DEPTH PROPERTY SIZE & TOPOGRAPHY
- DENOTES STANDARD PCS CONNECTION - SEW-1151-S 12.
- ALL MAINTENANCE CHAMBERS REHAU/PLEX OR EQUIVALENT TYPE MANUFACTURED WITH PRE DESIGNED ANGLE WITH MINIMUM 600MM RISER.
- MAINTENANCE HOLES CONSTRUCTED IN ACCORDANCE WITH SYDNEY WATER DEEMED TO COMPLY DRAWINGS DTC 2000, DTC 2203, DTC 2220, DTC 2221, DTC 2222 AND AS SPECIFIED IN WSA 02-2002-2.2
- THE CONTRACTOR WAS TO CONFIRM THE LOCATION AND INVERT LEVELS OF THE EXISTING SEWER AT CHAINAGE 0.00 OF LINE 1, 2, 9 & 10 PRIOR TO COMMENCEMENT OF WORKS. ANY DISCREPANCIES WERE DETERMINED BETWEEN WHAT WAS LOCATED ON SITE AND WHAT WAS QUOTED ON THIS PLAN, THE DESIGNER WAS NOTIFIED IMMEDIATELY.
- ⊕ DENOTES LOT SERVICED BY CN210775WW
- DENOTES LOT SERVICED BY CN207528WW

ENVIRONMENTAL REQUIREMENTS.

- THE REVIEW OF ENVIRONMENTAL FACTORS WAS AN INTEGRAL PART OF THIS DESIGN. ALL EROSION AND SEDIMENTATION CONTROL COMPLIED TO THE STANDARDS OF THE SOIL CONSERVATION SERVICE OF N.S.W.
- ALL OPEN STORM WATER GRATES & STORM WATER CHANNELS DOWNSTREAM OF CONSTRUCTION ACTIVITY ADEQUATELY PROTECTED BY STRAW BALES OR GEOTEXTILE FENCE.
- SILT STOP DEVICES INSTALLED PRIOR TO ANY CONSTRUCTION ACTIVITY, EFFECTIVELY MAINTAINED AND REMOVED ONLY AFTER THE AREA HAS BEEN SATISFACTORILY RE-VEGETATED.
- SILTATION CONTROL CARRIED OUT TO THE SATISFACTION OF THE SITE SUPERINTENDENT.
- ALL STOCKPILES OF EXCAVATED MATERIAL SURROUNDED BY STRAW BALES AND/OR GEOTEXTILE FENCE TO THE SATISFACTION OF THE SUPERINTENDENT.
- SITE RESTORATION CARRIED OUT TO THE SATISFACTION OF THE SUPERINTENDENT.
- NO TREES OR VEGETATION REMOVED WITHOUT PRIOR APPROVAL FROM THE SUPERINTENDENT AND OR LOCAL GOVERNMENT AUTHORITY.

DTC DRAWING SCHEDULE		
DRAWING	REVISION	DATE
2000	D	31/07/2024
2200	G	31/07/2024
2201	F	31/07/2024
2203	C	31/07/2024
2220	E	31/07/2024
2221	D	31/07/2024
2222	D	31/07/2024
2223	C	31/07/2024

No.	AMENDMENT DESCRIPTION	BY	DATE
I	WORK AS CONSTRUCTED	A.M	24.02.26
H	MINOR AMENDMENTS TO L1 GRADE	SP	28.7.25
G	MINOR AMENDMENTS TO ALIGNMENT	A.M	10.03.25
F	REVISED AS PER SYDNEY WATER COMMENTS	LD	24.02.25
E	FOR SWC APPROVAL	SP	15.01.25
D	AMENDMENTS TO ACCOMMODATE CIVILS	SP	28.11.24
C	AMENDMENTS TO SUIT LOT LAYOUT	SP	30.8.24
B	L 11, 12 & 13 ADDED + TEMP DISUSE	SP	04.06.24
A	ISSUED FOR TENDER	SP	16.04.24

PLAN DRAWN DATE: 24.02.26

VERSION: 1

SHEET 1

OF

6

SHEETS

GA 2020

PLAN TO BE READ IN CONJUNCTION WITH CURRENT SYDNEY WATER STANDARDS SYDNEY WATER CORPORATION
PRIOR TO COMMENCEMENT OF EXCAVATION FOR PROPOSED AND EXISTING SERVICES CONTACT:-
DIAL BEFORE YOU DIG Ph. 1100
ELECTRICITY Ph.
GAS Ph.
TELECOMMUNICATIONS Ph.
GIVING AT LEAST 48 HOURS NOTICE.

UTILITIES			
TYPE	DATE	REF.	
PROP. STORMWATER: SWD	28.11.24		

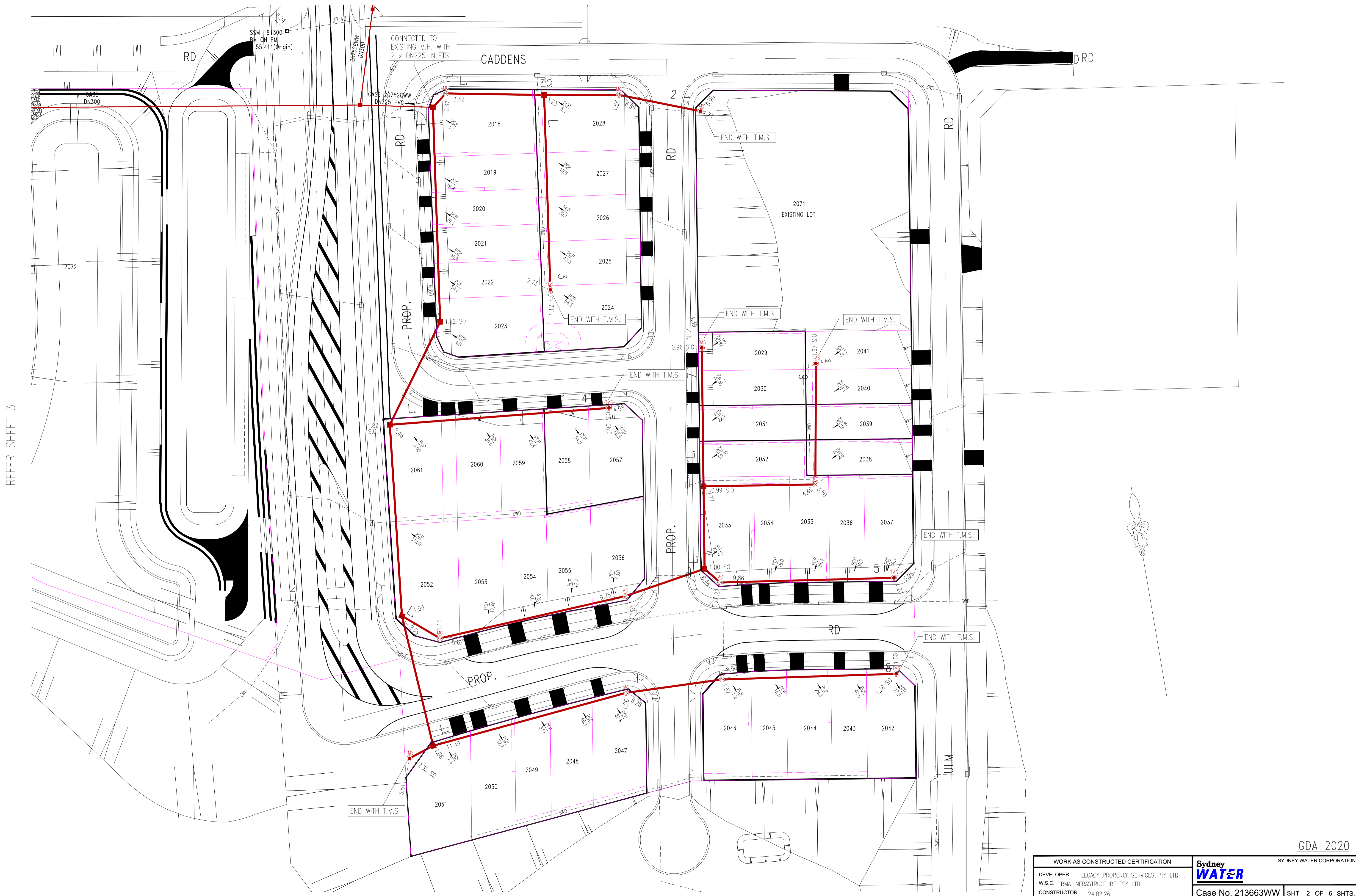
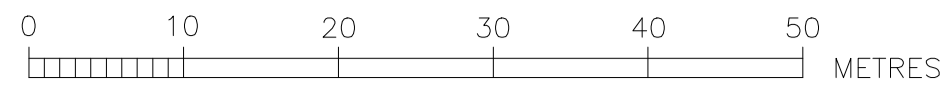
WORK AS CONSTRUCTED CERTIFICATION			
DEVELOPER	LEGACY PROPERTY SERVICES PTY LTD		
WATER SERVICE CO-ORDINATOR	RMA INFRASTRUCTURE PTY LTD		
CONSTRUCTOR	SPRINGFIELD CIVIL		
COMPLETED	24.02.26	W.A.C. PREPARED	24.02.26
DESIGNER	RMA INFRASTRUCTURE PTY LTD		
I CERTIFY THAT THE WORKS HAVE BEEN CONSTRUCTED IN ACCORDANCE WITH THE WORK AS CONSTRUCTED DRAWINGS.			

PIPE SCHEDULE				
SIZE DN	TYPE	CLASS	LENGTH	PIPE JOINING METHOD / NOTES
150	U.P.V.C.	SN8	760.57	S.W.J
225	U.P.V.C.	SN8	192.01	S.W.J
DESIGN-HEAD m NO BOUNDARY TRAPS REQUIRED.				

AUSTRALIAN HEIGHT DATUM	
SCALES	
PLAN 1:500	SECTION HOR. 1:500
	VERT. 1:125
CROSS SECTIONS NATURAL	
LENGTHS, DEPTHS & LEVELS ARE IN METRES.	

NO AMENDMENTS ARE TO BE MADE TO THIS PLAN WITHOUT REFERENCE TO SYDNEY WATER. THIS PLAN IS NOT NECESSARILY UP TO DATE OR CORRECT AND SYDNEY WATER ACCEPTS NO RESPONSIBILITY.
U.B. DIRECTORY MAP 184 GRID G5 (Ed. 41)
SHEET 1 OF 6 File No. N/A

Sydney WATER SYDNEY WATER CORPORATION
Case No. 213663WW
PENRITH SEWERAGE DRAINS TO KINGSWOOD CARRIER ST. MARYS S.T.W.

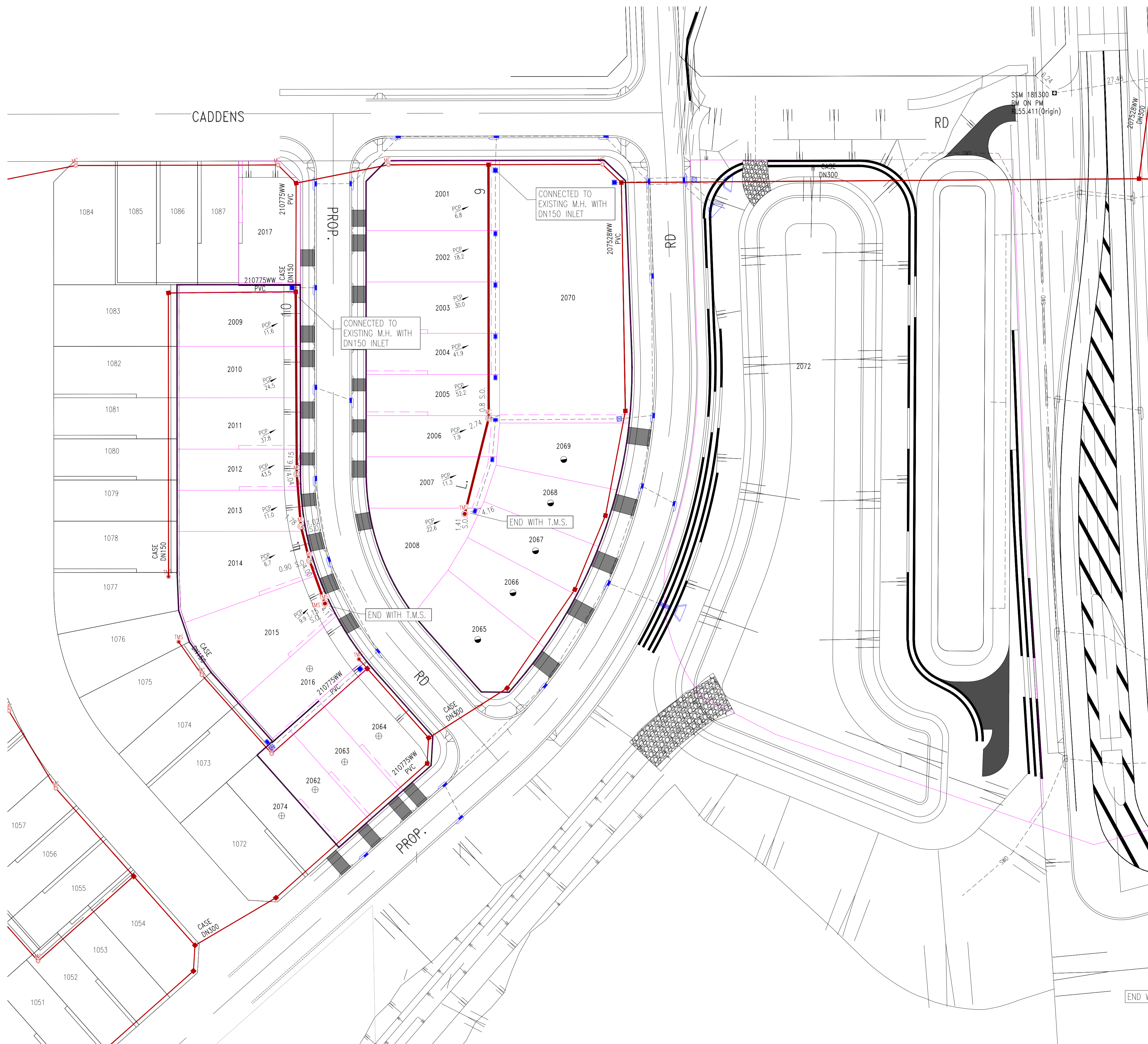


REFER SHEET 3

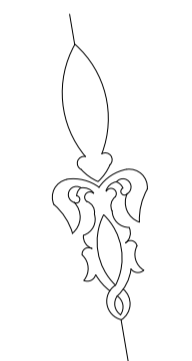
SITE PLAN
1:500

PLAN DRAWN DATE: 24.02.26
VERSION: 1
SHEET 2 OF 6 SHEETS

GDA 2020		SYDNEY WATER CORPORATION	
WORK AS CONSTRUCTED CERTIFICATION		Sydney WATER	
DEVELOPER	LEGACY PROPERTY SERVICES, PTY LTD	Case No. 213663WW SHT 2 OF 6 SHTS.	
W.S.C. RMA INFRASTRUCTURE	PTY LTD		
CONSTRUCTOR	24.02.26		
COMPLETED	SPRINGFIELD CIVIL		
W.A.C. PREPARED	24.02.26		
DESIGNER	RMA INFRASTRUCTURE PTY LTD	SYDNEY WATER CORPORATION	
I CERTIFY THAT THE WORKS HAVE BEEN CONSTRUCTED IN ACCORDANCE WITH THE WORK AS CONSTRUCTED DRAWINGS		FOR DETAILS OF SERVICES SEE SHEET 1	

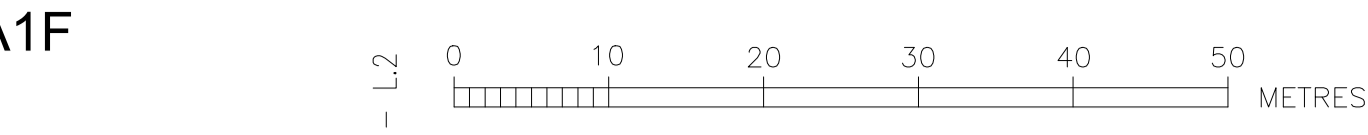


REFER SHEET 2



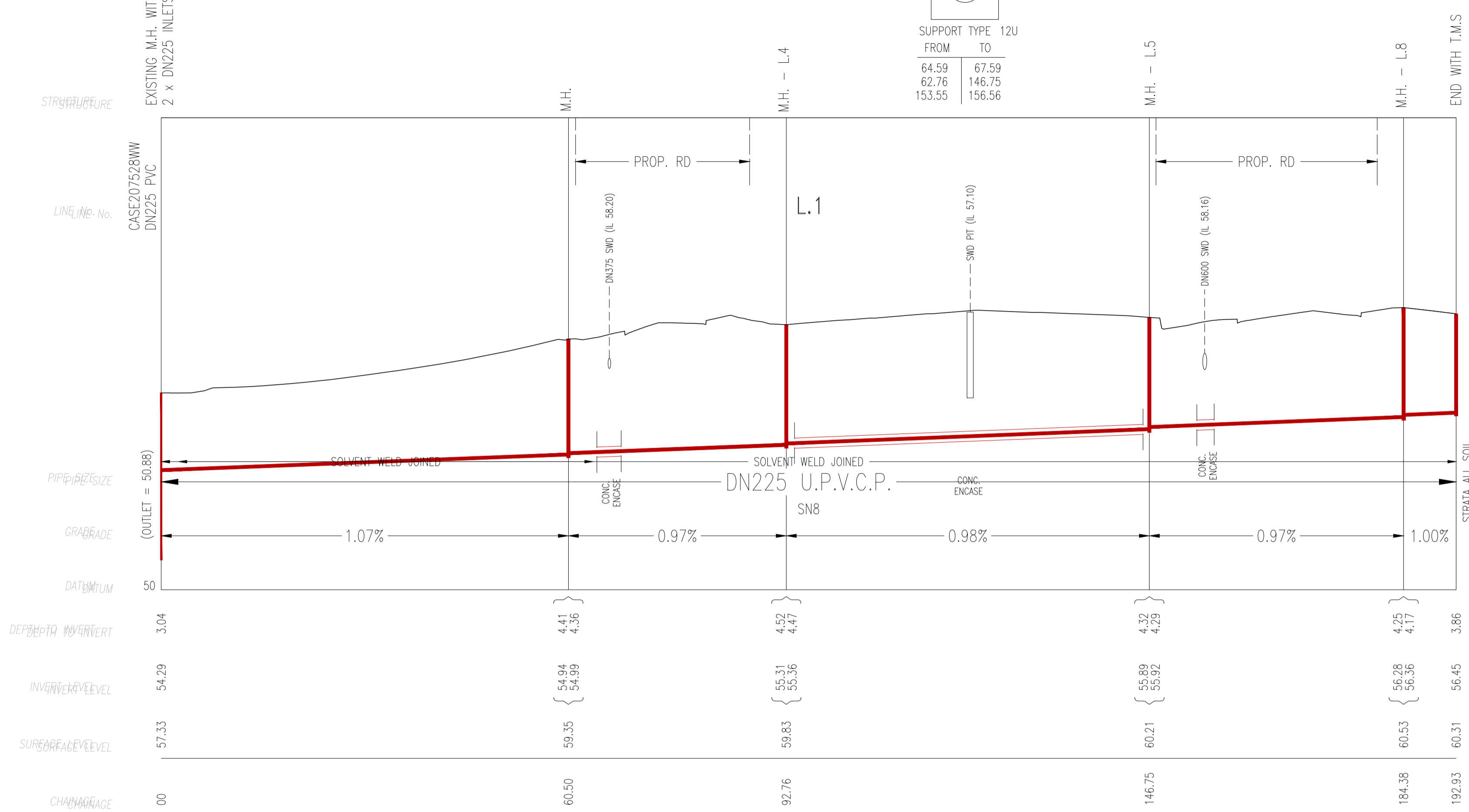
SITE PLAN
1:500

<p>WORK AS CONSTRUCTED CERTIFICATION</p> <p>DEVELOPER LEGACY PROPERTY SERVICES PTY LTD</p> <p>W.S.C. RMA INFRASTRUCTURE PTY LTD</p> <p>CONSTRUCTOR 24.02.26</p> <p>COMPLETED SPRINGFIELD CIVIL</p> <p>W.A.C. PREPARED 24.02.26</p> <p>DESIGNER RMA INFRASTRUCTURE PTY LTD</p> <p>I CERTIFY THAT THE WORKS HAVE BEEN CONSTRUCTED IN ACCORDANCE WITH THE WORK AS CONSTRUCTED DRAWINGS</p>		<p>GDA 2020</p> <p>SYDNEY WATER CORPORATION</p> <p>Sydney WATER</p> <p>Case No. 213663WW SHT 3 OF 6 SHTS.</p> <p>SYDNEY WATER CORPORATION</p> <p>FOR DETAILS OF SERVICES SEE SHEET 1</p>
---	--	---



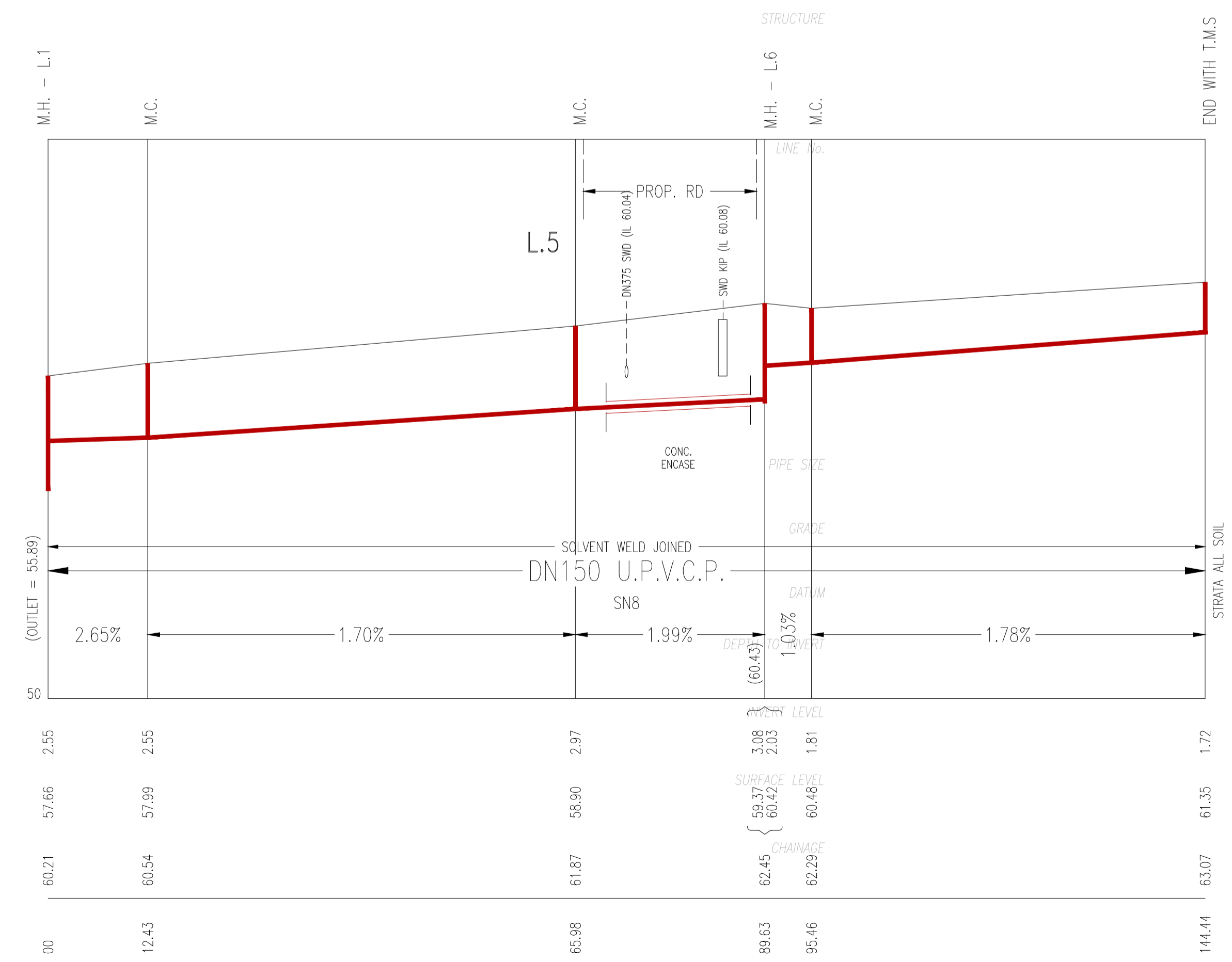
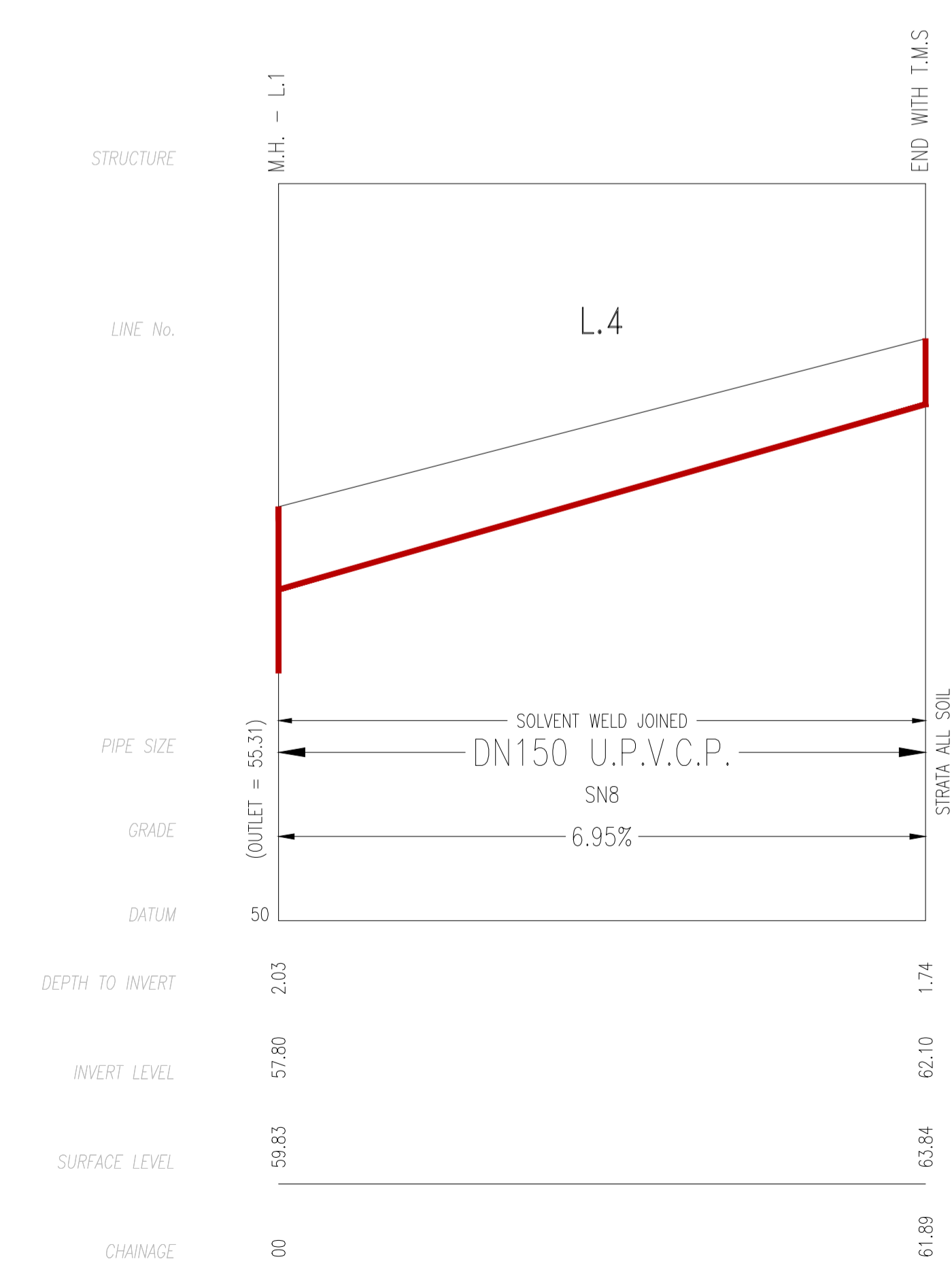
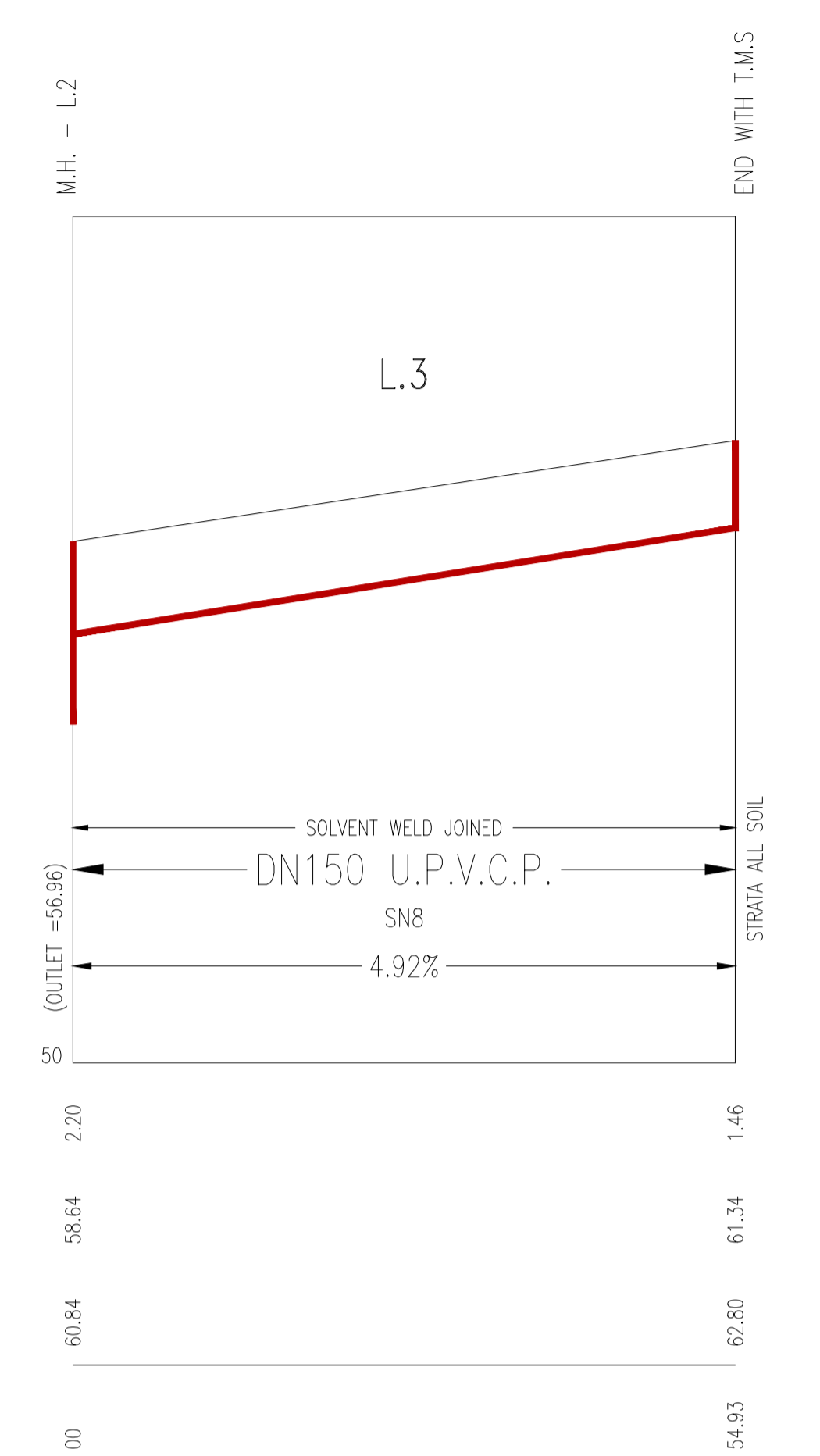
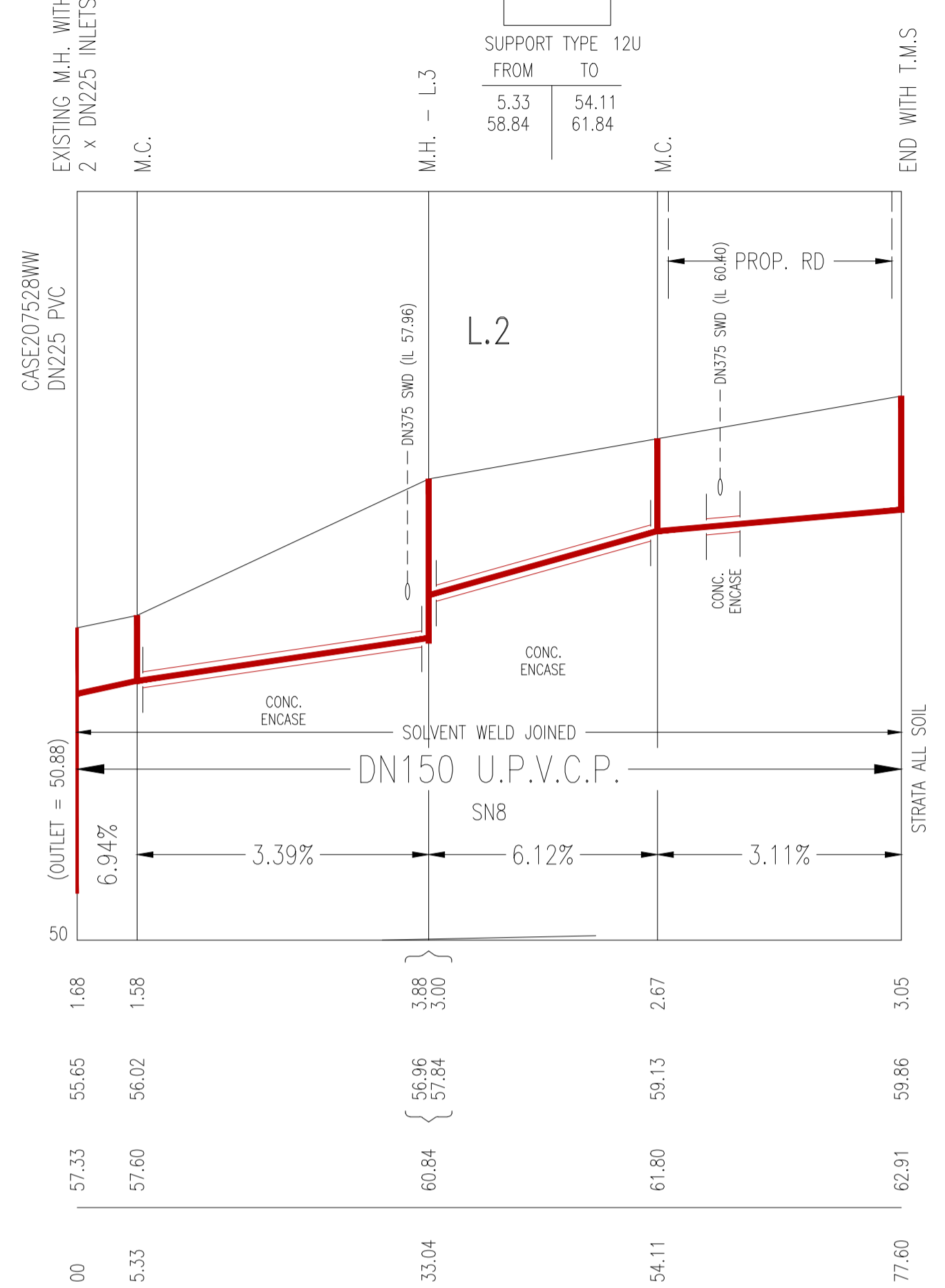
CONCRETE ENCASED

SUPPORT TYPE 12U	
FROM	TO
64.59	67.59
62.76	146.75
153.55	156.56



CONCRETE ENCASED

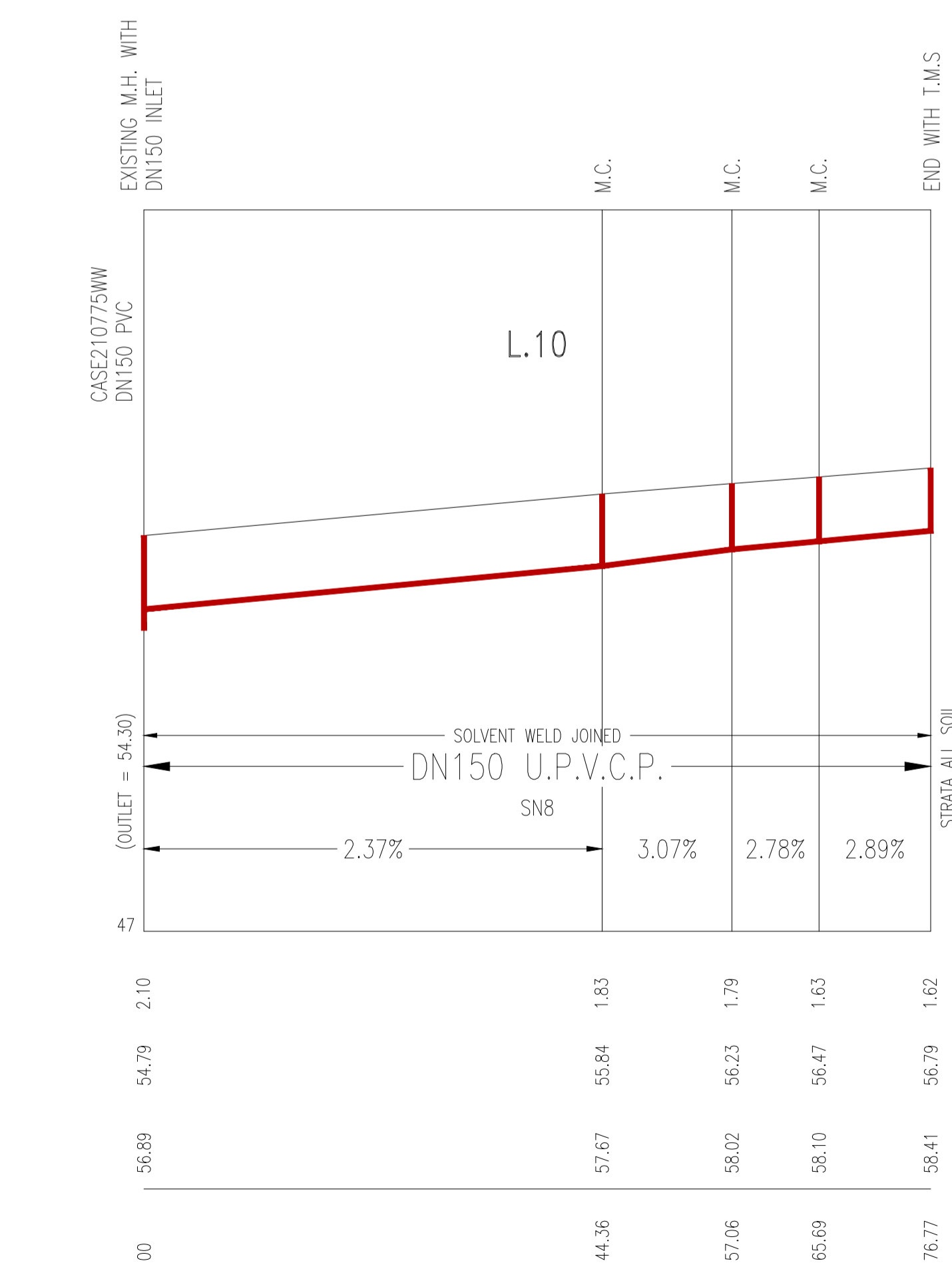
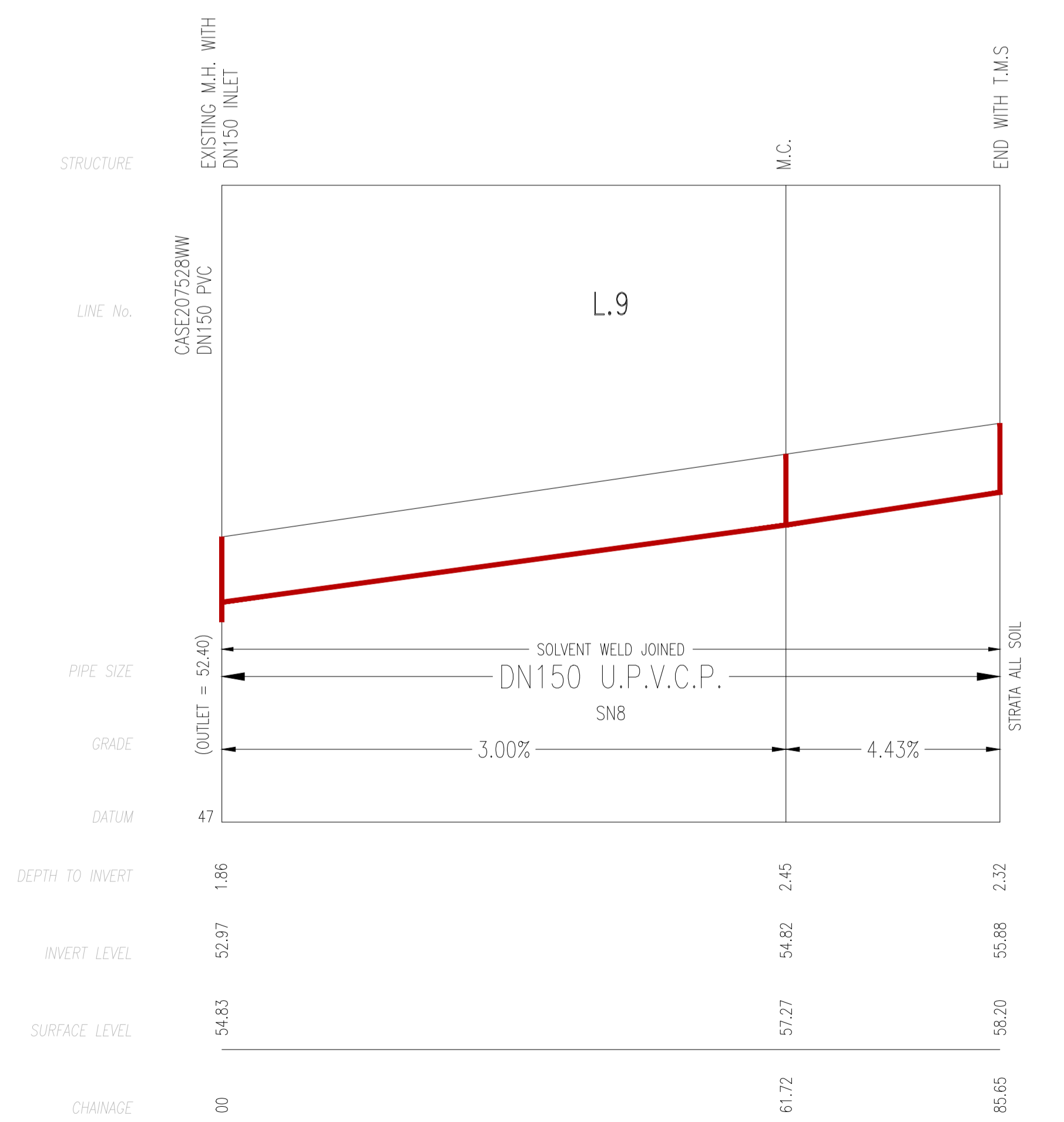
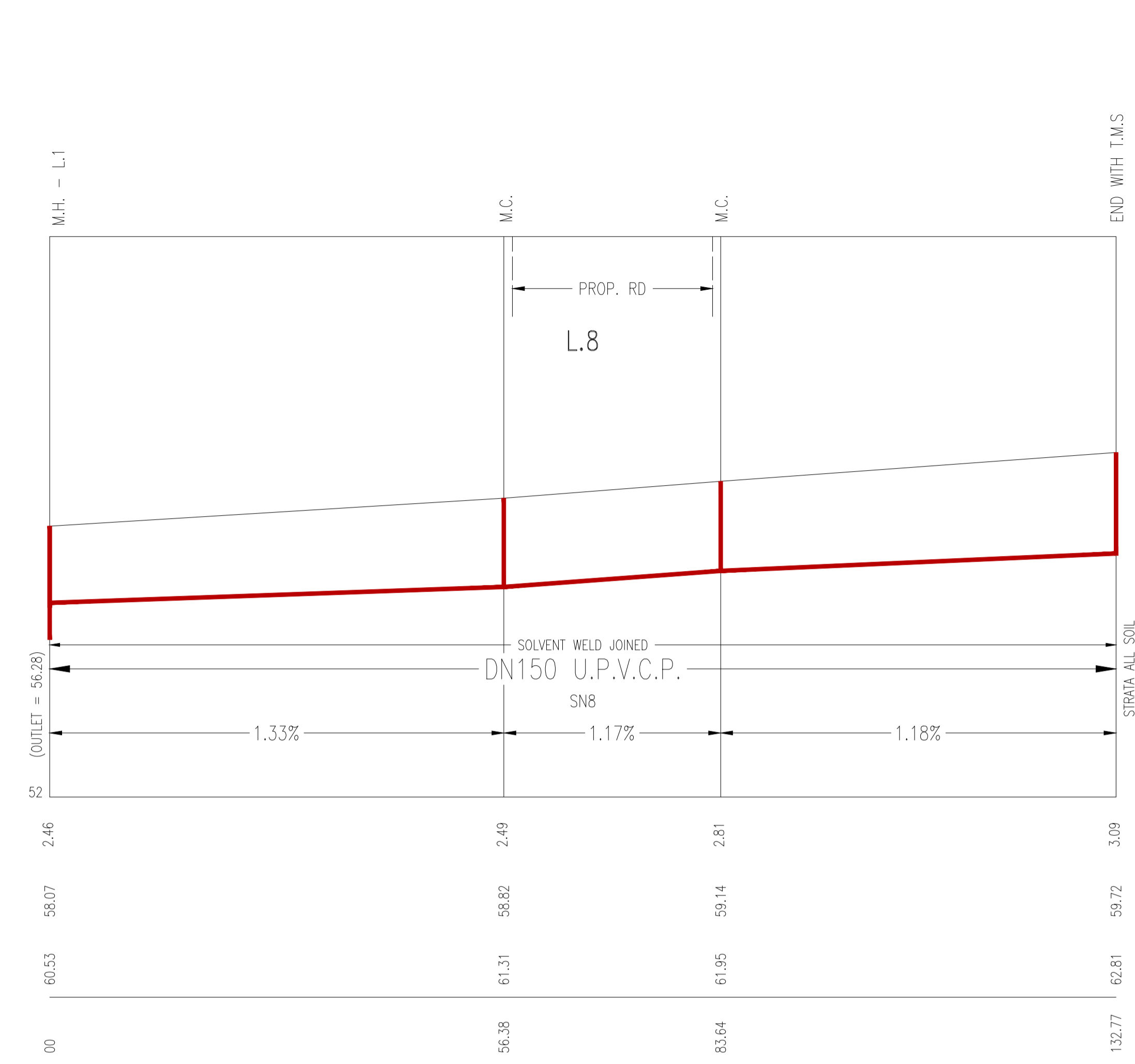
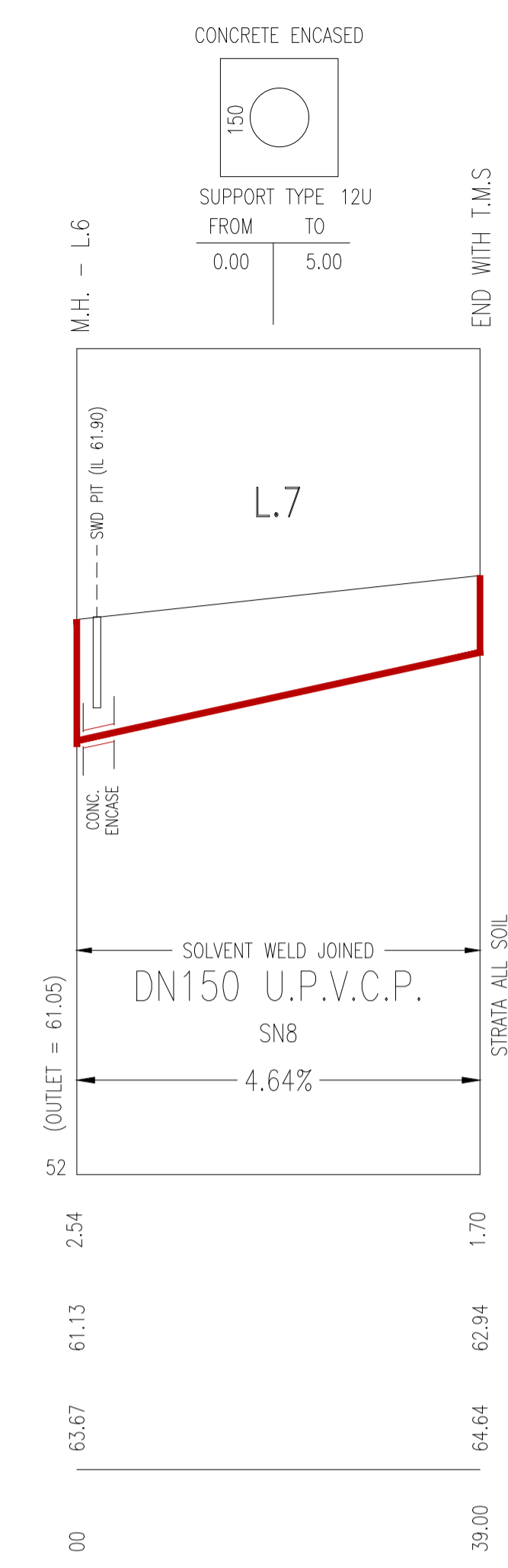
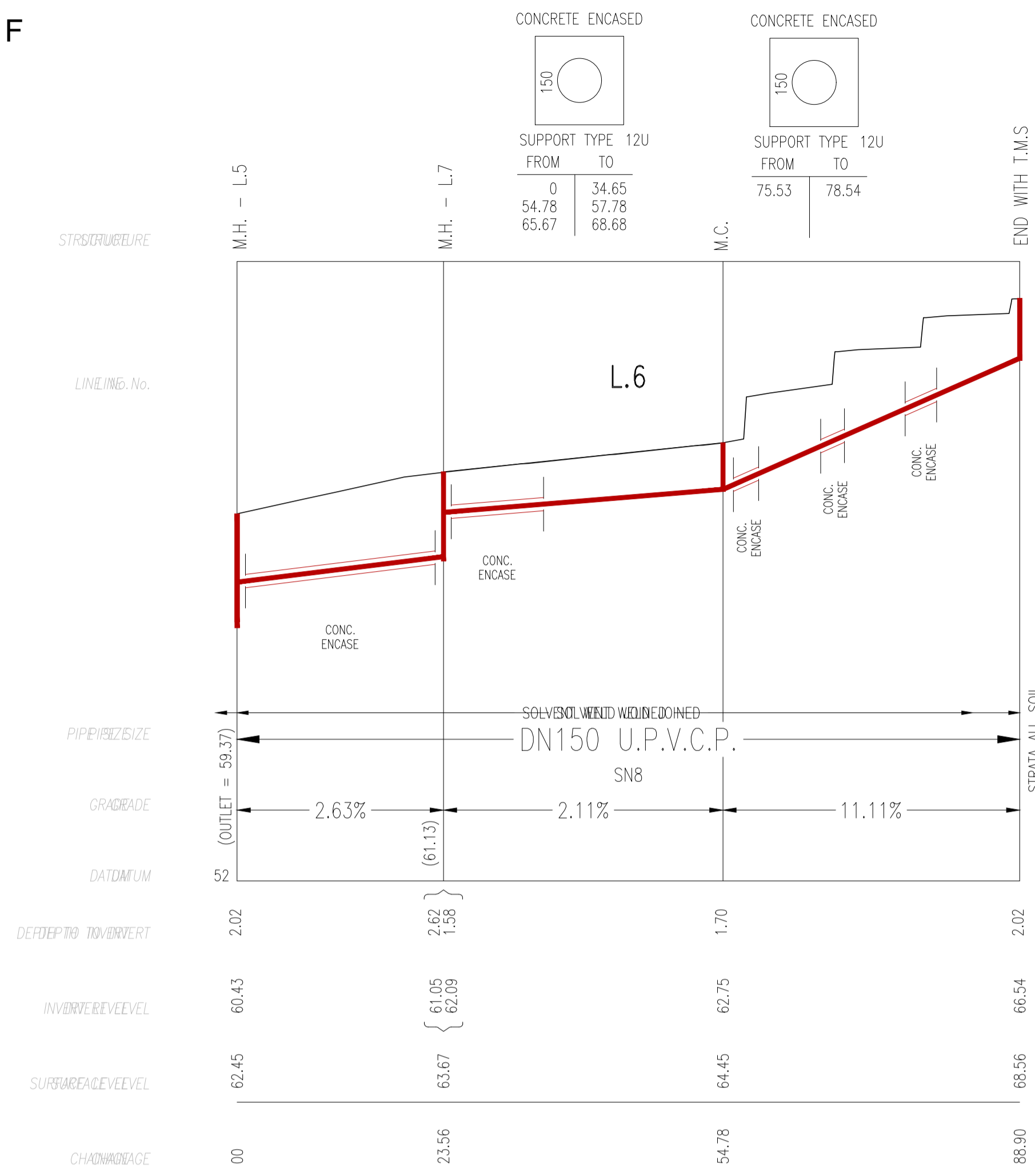
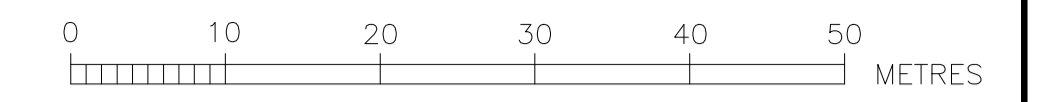
SUPPORT TYPE 12U	
FROM	TO
5.33	67.59
58.84	146.75
	156.56



CONCRETE ENCASED

SUPPORT TYPE 12U	
FROM	TO
61.98	88.63

WORK AS CONSTRUCTED CERTIFICATION		Sydney WATER SYDNEY WATER CORPORATION	
DEVELOPER	LEGACY PROPERTY SERVICES PTY LTD	Case No.	213663WW
W.S.C. RMA INFRASTRUCTURE PTY LTD		SHT	4 OF 6 SHTS.
CONSTRUCTOR	24.02.26		
COMPLETED	SPRINGFIELD CIVIL		
W.A.C. PREPARED	24.02.26		
DESIGNER	RMA INFRASTRUCTURE PTY LTD	SYDNEY WATER CORPORATION	
I CERTIFY THAT THE WORKS HAVE BEEN CONSTRUCTED IN ACCORDANCE WITH THE WORK AS CONSTRUCTED DRAWINGS		FOR DETAILS OF SERVICES SEE SHEET 1	



WORK AS CONSTRUCTED CERTIFICATION		Sydney WATER		SYDNEY WATER CORPORATION	
DEVELOPER	LEGACY PROPERTY SERVICES PTY LTD	Case No.	213663WW	SHT	5 OF 6 SHTS.
W.S.C. RMA INFRASTRUCTURE PTY LTD		COMPLETED	SPRINGFIELD CIVIL		
CONSTRUCTOR	24.02.26	W.A.C. PREPARED	24.02.26		
DESIGNER	RMA INFRASTRUCTURE PTY LTD	I CERTIFY THAT THE WORKS HAVE BEEN CONSTRUCTED IN ACCORDANCE WITH THE WORK AS CONSTRUCTED DRAWINGS			
FOR DETAILS OF SERVICES SEE SHEET 1					